

LOS ANGELES UNIFIED SCHOOL DISTRICT

Stanford Achievement Test, Ninth Edition, Form T

Charts 1-10 display the *Stanford 9* mean percentile ranks from 1997-98 through 2001-02 in each of the STAR-required subject areas. Mean percentile ranks indicate how well students performed in relation to students in the national norming sample.

Chart 1
Stanford 9 Reading Mean Percentiles
Elementary Schools

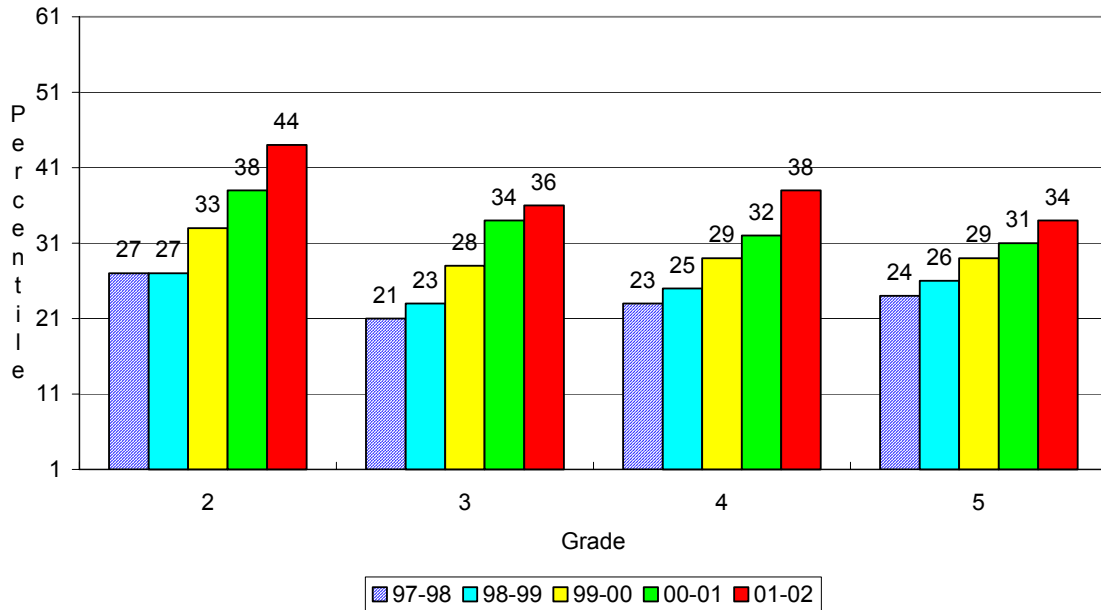
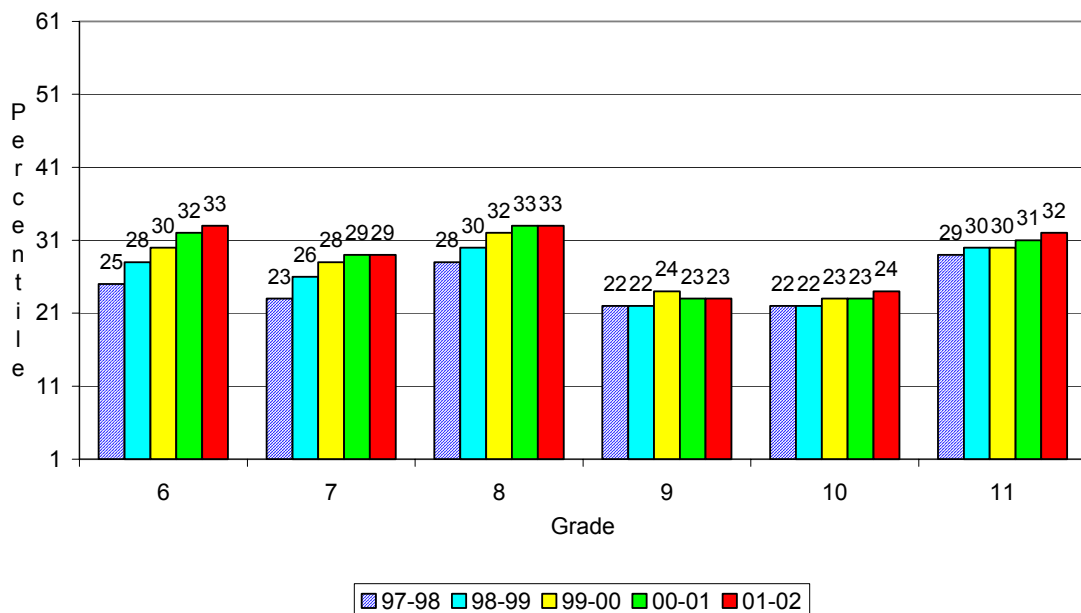


Chart 2
Stanford 9 Reading Mean Percentiles
Secondary Schools



LOS ANGELES UNIFIED SCHOOL DISTRICT

Chart 3
Stanford 9 Language Mean Percentiles
Elementary Schools

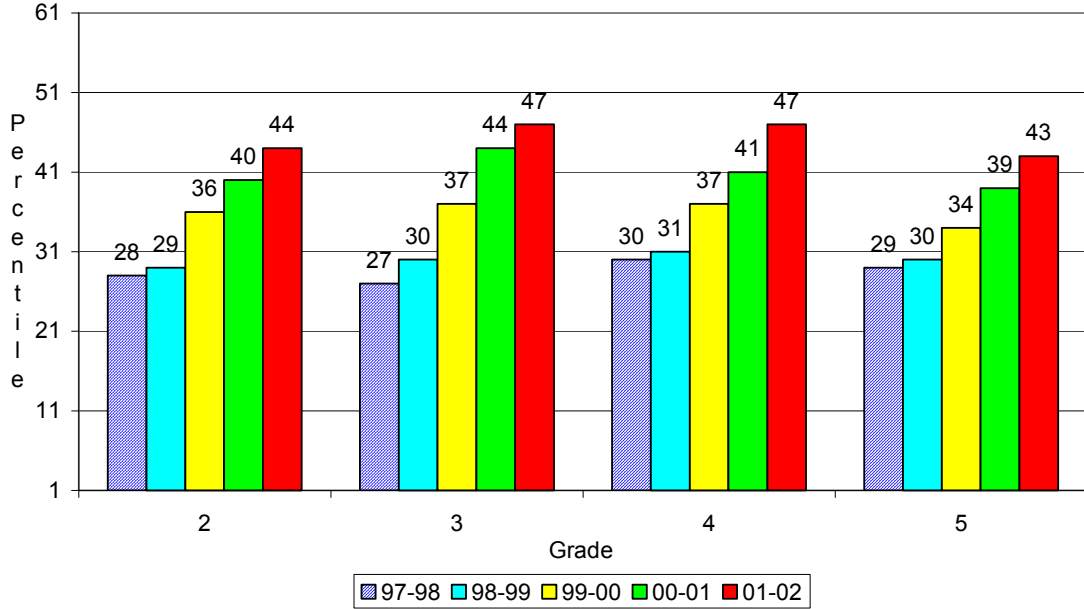
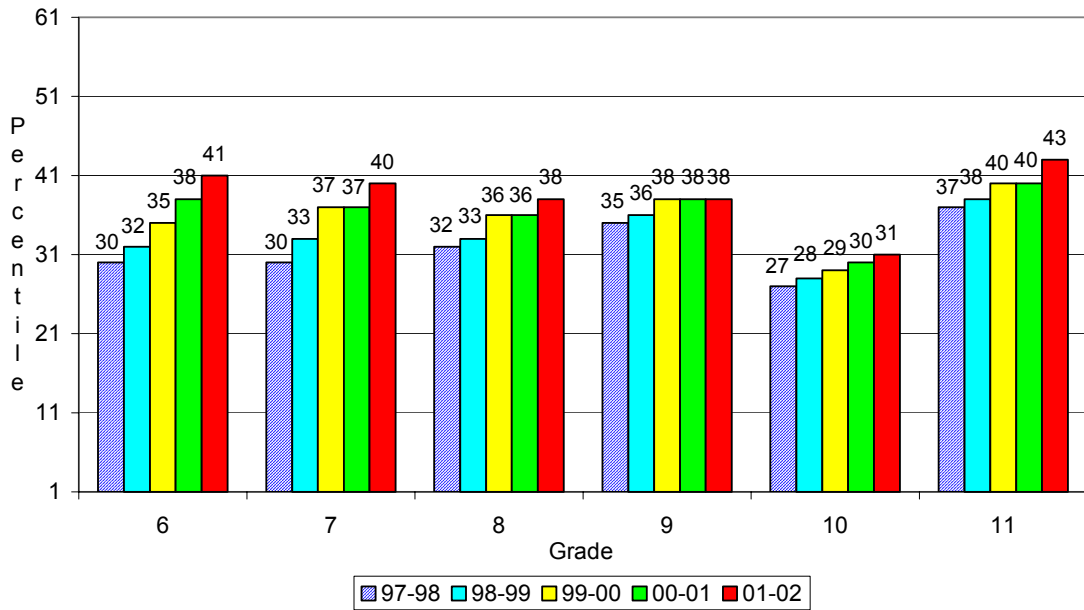


Chart 4
Stanford 9 Language Mean Percentiles
Secondary Schools



LOS ANGELES UNIFIED SCHOOL DISTRICT

Chart 5
Stanford 9 Math Mean Percentiles
Elementary Schools

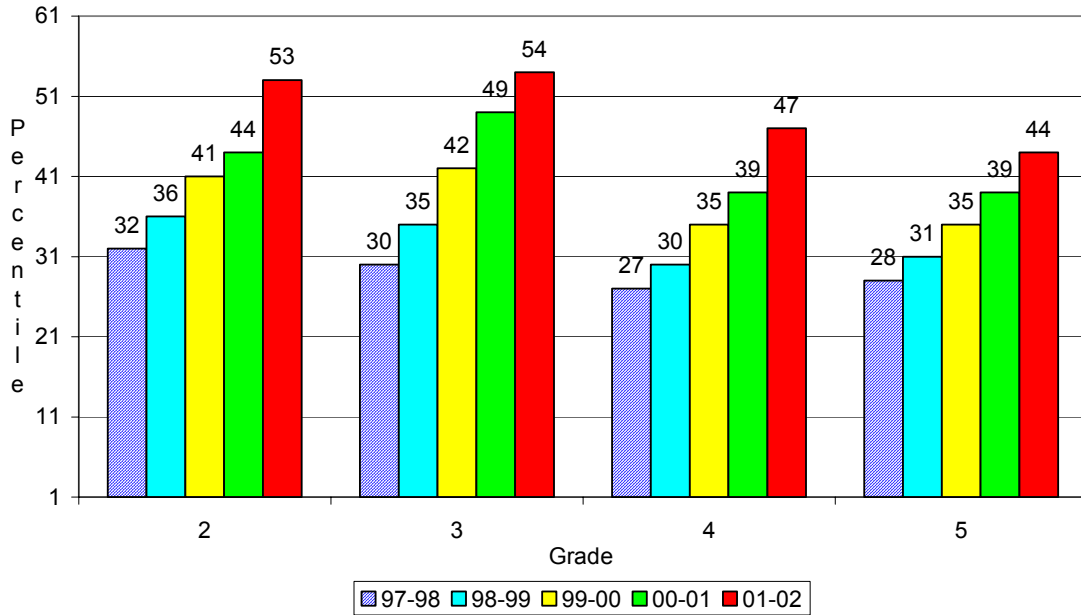
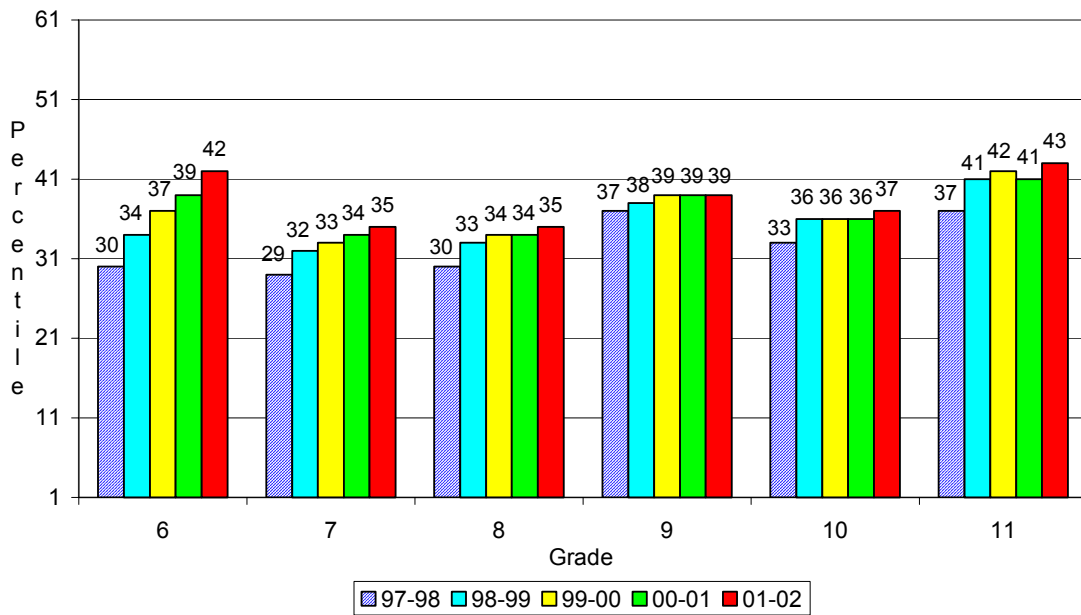


Chart 6
Stanford 9 Math Mean Percentiles
Secondary Schools



LOS ANGELES UNIFIED SCHOOL DISTRICT

Chart 7
Stanford 9 Spelling Mean Percentiles
Elementary Schools

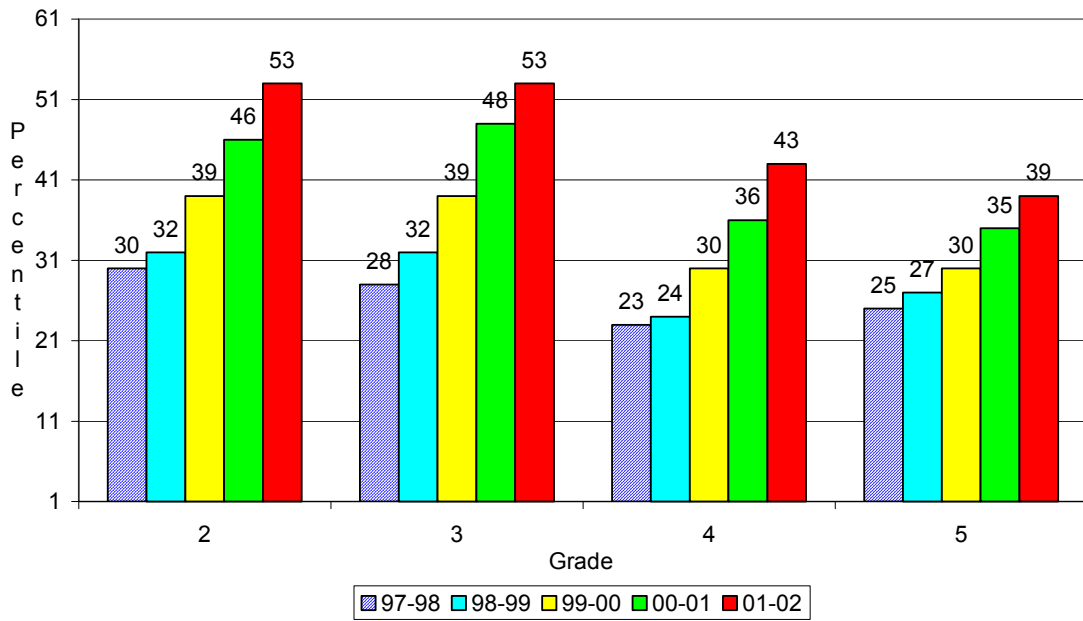
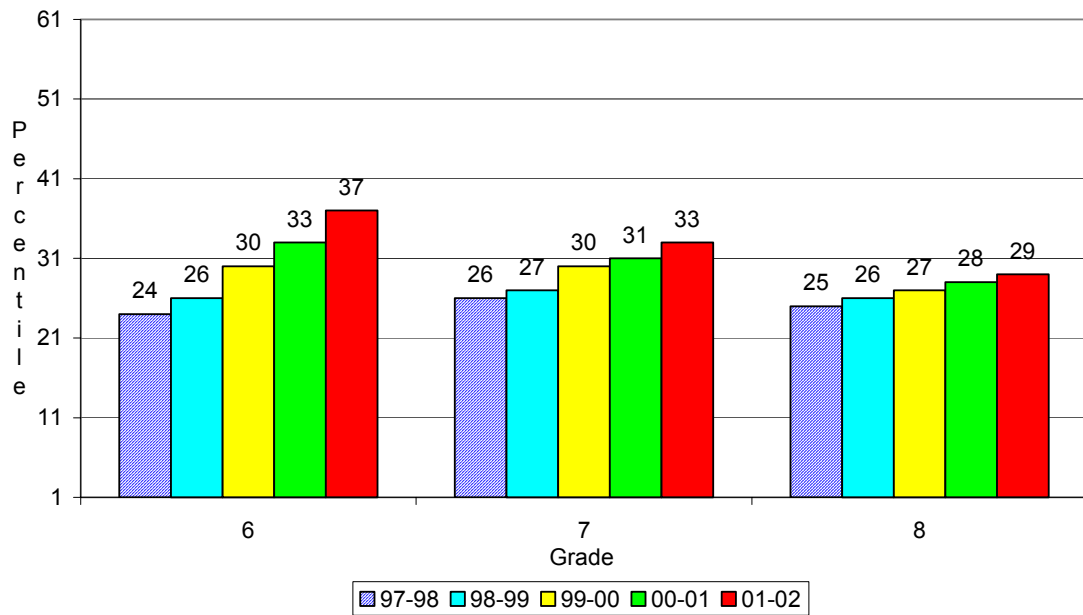


Chart 8
Stanford 9 Spelling Mean Percentiles
Secondary Schools



LOS ANGELES UNIFIED SCHOOL DISTRICT

Chart 9
Stanford 9 Science Mean Percentiles
Secondary Schools

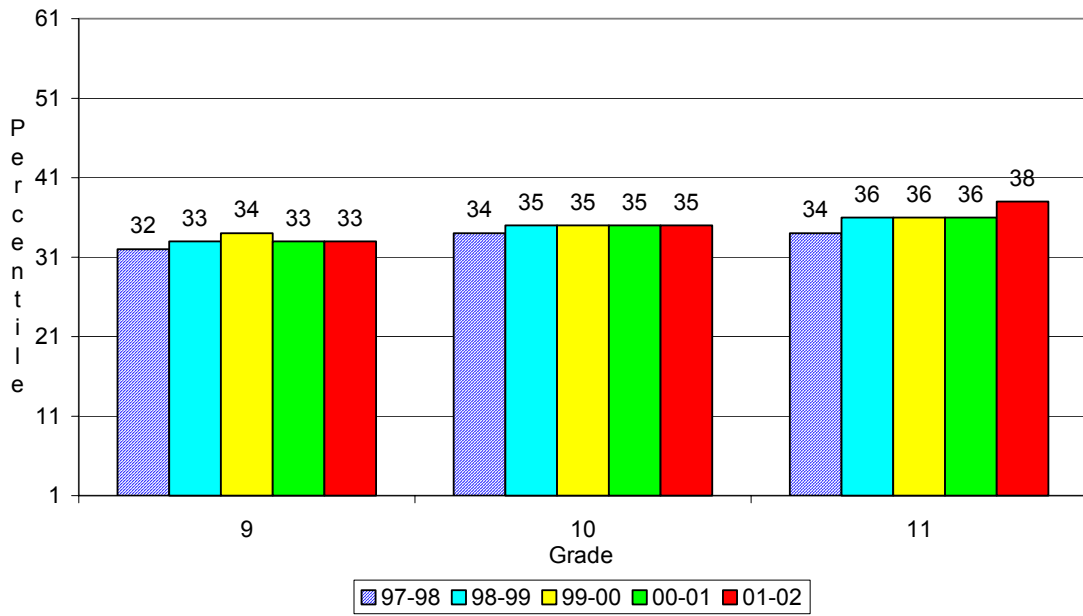


Chart 10
Stanford 9 Social Science Mean Percentiles
Secondary Schools

