



# District 1

# Coach Talk



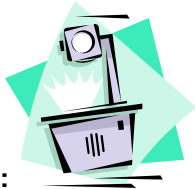
The newsletter for District 1 Elementary Literacy Coaches

August 2004  
Volume 3, Issue 1

Robert Collins, *Superintendent*

Annette Star, *Literacy Coordinator*

*District 1 ....where students come first!*



## MEETINGS:

**August 5**      **Coach Meeting**  
Devonshire Site  
8:00 a.m. to 3:30 p.m.

**September 23**      **Coach Meeting**  
Devonshire Site  
8:00 a.m. to 3:30 p.m.

## TRAININGS:

**August 9-13**      **New Coach Training**  
Wilshire Grand Hotel  
8:00 a.m. to 3:30 p.m.

## READING FIRST EVENTS:

**Cohort #1:**  
**September 29-30**  
**Reading First Coach Institute**  
Wilshire Grand Hotel  
8:00 a.m. to 3:30 p.m.

**Cohort #2:**  
**September 9-10**  
**Reading First Coach Institute**  
Wilshire Grand Hotel  
8:00 a.m. to 3:30 p.m.

**Cohort #2:**  
**September 13-15**  
**Reading First Coach Institute**  
Wilshire Grand Hotel  
8:00 a.m. to 3:30 p.m.

## OTHER DATES:

**August 20**      **First day of work for  
Traditional Calendar Coaches**



On July 1, 2004, all of former District A and two-thirds of former District C combined to form the new local District 1!

The larger size of the eight new Local Districts in L.A.U.S.D. presents challenges to local district personnel, but Bob Collins, Superintendent of the new Local District 1, has reaffirmed his commitment to "B-HAGs" (Big Hairy Audacious Goals)!

Annette Star, Elementary Literacy Coach Coordinator of District 1 is confident her Literacy Coaches will continue the outstanding work they have begun to improve student achievement in language arts.



## Summer Schools Teach OCR Unit 6

This year the Language Arts instruction during Summer School focused on Unit 6 of the Open Court Reading program. Shown here is teacher Annette Losin and the Concept/Question Board she and her 2<sup>nd</sup> grade students at Lemay ES Summer School have been engaged with during their focus on the Unit 6 theme "Our Country." Ms. Losin teaches at Lorne ES during the regular school year.



## News Flash!

Kathy Frank, Literacy Coach at Bassett ES since July 2001, has been selected to become an OCR Expert! She will be working with several Reading First schools in Local District 2 beginning on August 13.

Kathy noted that being a Literacy Coach "has been a valuable learning experience." We are sorry to lose her, but we know that District 2 will benefit from her experience and expertise!

### *How to contact us:*

**Annette Star**  
654-3664  
[annette.star@lausd.net](mailto:annette.star@lausd.net)

**Diana Keeney**  
654-3648  
[diana.keeney@lausd.net](mailto:diana.keeney@lausd.net)

**Joanne Cho**  
654-3670  
[joanne.cho@lausd.net](mailto:joanne.cho@lausd.net)

**Aviva Freeman**  
654-3607  
[aviva.freeman@lausd.net](mailto:aviva.freeman@lausd.net)

**Cecilia Martinez**  
654-3607  
[cecilia.martinez@lausd.net](mailto:cecilia.martinez@lausd.net)

**Jet Manalastas**  
654-3654  
[jet.manalastas@lausd.net](mailto:jet.manalastas@lausd.net)



## A Note from Annette...

As we begin a new school year and anticipate the challenges of our work as change agents in the schools, we should remind ourselves that enthusiasm and a positive outlook are contagious. In his book, *Leading in a Culture of Change*, Michael Fullan says, "effective leaders make people feel that even the most difficult problems can be tackled productively. They are always hopeful—conveying a sense of optimism and an attitude of never giving up in the pursuit of highly valued goals."

Surely our goal of having every student in District 1 become a successful reader is worthy of our **energy and enthusiasm and hope!**

--- Annette Star  
Literacy Coordinator

## Expert Advice

As another school year begins, let's remind our teachers of the importance of three things when looking at a lesson:

1. The Planning --looking at the needs of our students (Clear Expectations).
2. The Teaching--engaging our students (Accountable Talk and Academic Rigor).
3. The Reflecting--reviewing evidence to see if our goal was met.

In order for our teachers to do this, we might have to refresh their memory with the 12 Core Issues of Lesson Design and Reflection. Here are some of our favorites:

- #1 What is the intended student learning? What are the skills, concepts, habits of mind being developed?
- #3 What difficulties, misunderstandings, or misconceptions might students have about this content?
- #5 How will the teacher model/explain clear expectations for the students' learning?
- #12 How will the teacher do things differently next time?

We look forward to working with our new family of coaches! Cheers to a new year!  
from your Experts,

Joanne, Ariva & Cecilia

Editor:  
Diana Keeney,  
Literacy Advisor  
Graphics and Layout Design:  
Jet Manalastas,  
Literacy Secretary

## Happy Birthday AUGUST

- 5 JOANNE DUCHREIN
- 5 KADY PLOWMAN
- 18 SANDI BLACK
- 22 BEV SILVER
- 26 TEMIKA DIXON



## Pacing Plan Reminder

Assessment Report Dates - 2004/2005  
District Reading Program OCR 2000  
Dates Coaches and Reading First Teachers must have data in SOAR

Unit 1 / (Grade 1 - Week 6)

Grade	Single	C6 A	C6 B	C6 C	90/30 A	90/30 B	90/30 C	90/30 D
K								
1	11/02	10/15	8/20	8/20	10/11	8/25	8/25	8/23
2	11/09	10/19	8/18	8/24	10/18	9/02	8/25	9/02
3	11/03	10/20	8/25	8/24	10/13	8/25	8/25	8/26
4	11/04	10/19	8/25	8/24	10/14	9/02	8/25	8/31
5	10/27	10/11	8/17	8/17	10/05	8/18	8/25	8/24

Assessment Report Dates - 2004/2005  
District Reading Program OCR 2002  
Dates Coaches and Reading First Teachers must have data in SOAR

Unit 1 / (Grade 1 Units 1-2)

Grade	Single	C6 A	C6 B	C6 C	90/30 A	90/30 B	90/30 C	90/30 D
K								
1	11/03	10/18	8/23	8/23	10/11	8/23	8/24	8/27
2	11/16	10/20	8/24	8/24	10/25	9/02	10/27	9/10
3	11/08	10/15	8/24	8/20	10/19	9/02	8/24	9/02
4	11/09	10/20	8/24	8/25	10/14	9/02	8/24	9/01
5	10/28	10/13	8/18	8/18	9/14	8/30	8/24	8/23

Assessment Report Dates - 2004/2005  
District Reading Program Foro Abierto  
Dates Coaches and Reading First Teachers must have data in SOAR

Unit 1 / (Grade 1 - Week 6 unit 1-2)

Grade	Single	C6 A	C6 B	C6 C	90/30 A	90/30 B	90/30 C	90/30 D
K								
1	10/25	10/18	8/23	8/23	10/11	8/24	8/25	8/27
2	11/16	10/20	8/24	8/24	10/25	9/02	10/27	9/10
3	11/08	10/15	8/24	8/20	10/19	9/02	8/25	9/02
4	11/09	10/20	8/24	8/25	10/14	9/02	8/25	9/01
5	10/28	10/13	8/18	8/18	10/06	8/30	8/25	8/23